



HP Designjet T1120 SD-MFP

A trusted choice for demanding professionals



New affordable, easy-to-use integrated HP MFP

Fast, intuitive operation improves user efficiency

- Avoid the back and forth between devices. Easily perform key functions—such as copy, scan to USB or network, and file management—from the scanner touchscreen interface.
- Easily maintain this MFP and its supplies with HP Printer Utility and the self-sufficient scanner that does not require calibration at installation. LED lights help you to diagnose any issues.
- You're in total control with a new HP MFP that's easy to manage thanks to the HP Embedded Web Server.
- Concentrate on your customers and your projects thanks to this MFP's timesaving features, such as a CIS scanner that doesn't require a warm-up period.

Superior line and text quality at the right price

- Produce highly accurate drawings with a printer and HP Vivera inks that deliver outstanding details—with 0.1% line accuracy¹. The HP Three-black ink set—including a gray HP Vivera ink—produces true neutral gray, accentuating the detail in your prints.
- Powerful presentations—HP Vivera inks produce a range of colors, from vivid color to soft tones.
- See high-quality results—especially for lines and text—with CIS scanning technology and 1200 dpi optical resolution. Scan or copy archived documents of existing buildings or "as-build" drawings to share with colleagues or clients.
- Produce optimized results easily with predefined media profiles and settings for the originals you use most often. You don't have to spend a lot of time adjusting settings whenever you want to copy or scan.

- Media versatility—including over 35 Original HP media—provides additional flexibility.

Dependable, unique integrated HP solution

- Get back to work quickly knowing detailed prints are not a problem thanks to In-printer processing architecture and an 80 GB HDD.
- Convenient single-vendor solution—built together to work together. There's no greater convenience than having a single device with multiple functions and features reliably working in tandem to provide a very effective, very viable solution.
- Save valuable workspace with this ergonomic multifunction device. It also includes a 9 in (23 cm) touchscreen panel positioned on top of the scanner, which creates additional room in your office.



**For AEC
and GIS**
Small and
Medium Size
Business

Print in
35s/D

6
colors

80 GB
hard disk

HP-GL/2
in-printer
processing

CIS
Scanning
technology

Scan in
**1.5ips color,
5ips b&w**

Optimized
for line
and text



HP Designjet T1120 HD-MFP

A trusted choice for demanding professionals



Fast, versatile HP MFP for professional results

Superior copy, scan, and print results

- **Professional prints.** HP Vivera inks with the Three-black ink set produce a wide range of colors and fine detail.
- **Get the highest level of quality**—from line drawings to maps to posters—with CCD scanning technology and embedded PS.
- **Scan and archive older**—including previously folded—documents and save space.
- **Fast-drying, smudge-resistant prints.** HP Vivera inks are designed together with a range of Original HP printing materials.
- **Create stunning large-format posters that convey your message loud and clear.** For a 3 month trial period you can use the optional Serif PosterDesigner Pro for HP⁽¹⁾ with this MFP.

Performs 3 functions in 1—quickly and effectively

- **Print and scan quickly—so you're back to work fast.** Scan color documents at speeds up to 2 in (5.1 cm) per second (400 dpi Turbo mode) and black-and-white documents at up to 6 in (15.2 cm) per second (400 dpi Turbo mode). Print D (A1)-sized documents in just up to 35 seconds per page.⁽²⁾
- **Batch scanning and printing is fast and easy with this MFP.** Printing PLT, PPT, and PDF files is fast and easy, especially with HP Instant Printing Utility 2.0, which enables single-click printing of large-format CAD/GIS output. This MFP also includes collating and nesting features even when copying.

- **Print with confidence,** knowing that prints with high levels of detail are not going to cause problems thanks to in-printer processing, including an 80 GB HDD and embedded PS.
- **Assume greater control over this MFP**—and all copy, scan, and print functions—with a range of effective management tools via the printer's embedded Web server and the accounting feature in the scanner.
- **Copy documents directly to most other HP Designjet printers thanks to preconfigured drivers in the scanner.**

Do more with a unique integrated HP solution

- **Convenient single-vendor solution—built together to work together.** Bi-directional capabilities between the printer and scanner provide built-in intelligence, enabling you to get basic printer-status information and access the printer queue.
- **Save valuable workspace with a single, integrated multifunction solution.** The HP Designjet T1120 HD-MFP is just that solution with printer, scanner, touchscreen display, keyboard, and software all bundled into one device.
- **Quickly adapt to customer changes and demands with real time preview and retouch software.** Adjust and retouch the color in scanned documents with this MFP's color management tools, including a background cleaning option.

(1) Serif PosterDesigner Pro for HP is an optional feature. Not included, sold separately.

(2) Mechanical printing time on plain media in Fast mode with Economode on.

For GIS, Enterprise, and Copy shops	Print in 35s/D	6 colors	80 GB hard disk	Embedded PostScript®	CCD Scanning technology	Scan in 2ips color, 6ips b&w	Advanced color management options
-------------------------------------	----------------	----------	-----------------	----------------------	-------------------------	------------------------------	-----------------------------------

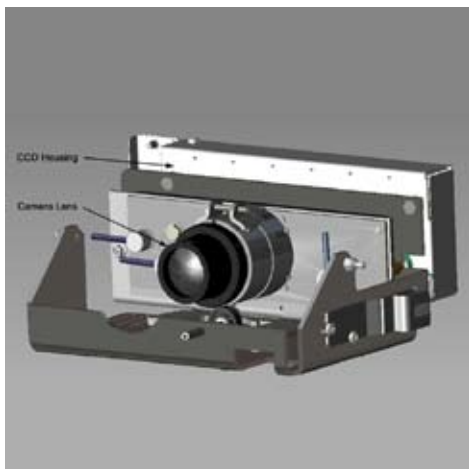
HP Designjet T1120 HD-MFP

1. Scanning speed of 2 in (5.1 cm) per second for color and 6 in (15.2 cm) per second for mono originals (400 dpi Turbo)
2. Print D (A1)-sized documents in up to 35 seconds per page
3. 15" touchscreen graphical display for easy, intuitive operation
4. Fast, real time preview enables greater control over final output
5. DVD/CD reader/writer to save files directly to disc
6. Built-in fast image processing for excellent copy and scan performance
7. Intuitive software provides easy-to-use scanning, copying, and network printing
8. The integrated product design saves workspace
9. Print output basket for high volume batch jobs
10. High scanning quality and speeds, excellent 3D scanning capability



vivera
HP INKS

- Accurate color
- Dark blacks
- True neutral grays
- Smooth area fills
- Subtle contrasts, from the most vivid color to the softest tones



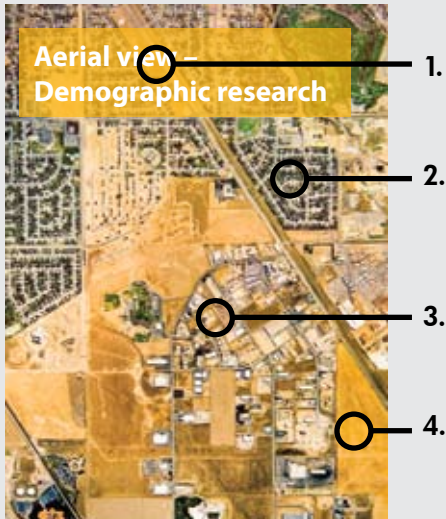
Triple 4-linear CCDs camera scanning technology

- Superior scanning quality: Color CCD technology includes three digital cameras with four arrays with RGB filters that separate color components and panchromatic BW filter to ensure superior quality on grayscale
- High application versatility
- Better results with previously folded paper
- Lower maintenance costs: modular technology, many customer-replaceable parts
- Can reach high scanning speeds thanks to powerful illumination and processing capabilities
- More tolerant to dust

A trusted choice for demanding professionals

Printing

Achieve professional prints—a wide range of color and fine details



1. Crisp text
2. Neutral grays and deep blacks
3. Uniform lines and fine detail
4. Accurate color

Copying

See impressive accuracy for any kind of original

Settings specially optimized for:

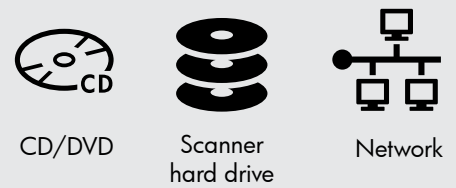
- CAD
- Map
- Brochure (line and text)
- Photo



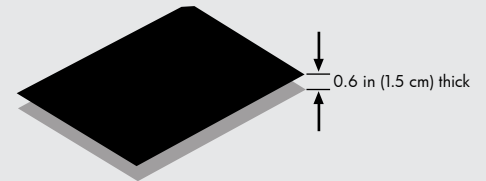
Improved quality for damaged documents thanks to the background cleaning feature

Scanning

Scan to many different locations



Scan original up to 0.6 in (1.5 cm) thick



Scan to many industry standard formats



Intuitive Software



Touchscreen fast preview ensure greater control over final output



The HP Designjet T1120 HD-MFP is designed specifically for GIS customers, enterprise environments, and copy shops requiring superior quality and advanced copy, scanning, performance, and manageability features—all from one integrated device.

